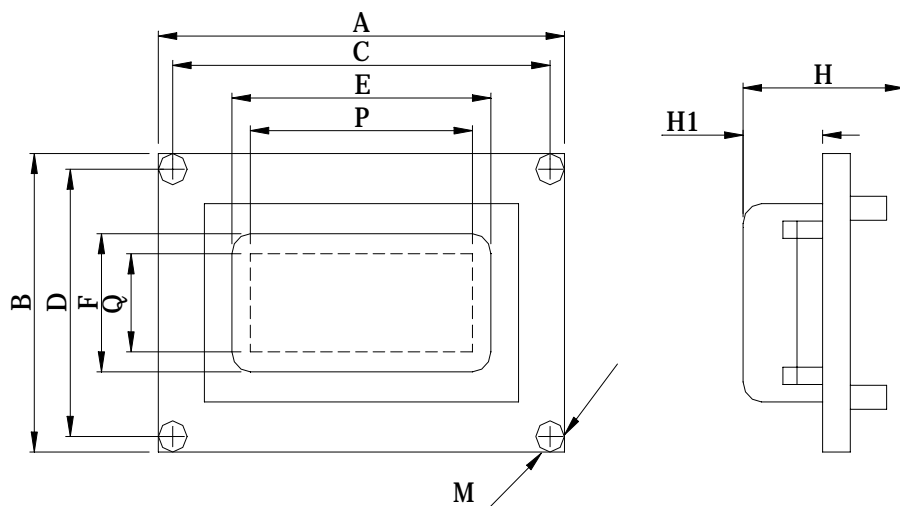


■ CUSTOMIZED LCD MODULE:

1.Dimension



A X B : Module size ____ x ____ mm

E X F : Viewing area ____ x ____ mm

P X Q : Display area ____ x ____ mm

H : Total thickness ____ mm

C : Length between mounting holes ____ mm

D : Length between mounting holes ____ mm

M : Length between mounting holes ____ mm

H1 : Upper thickness ____ mm

2.Display contents

- Character type ____ characters ____ lines
- Character font ____ mm + cursor
- Graphic type ____ dots X ____ dots
- Others

3.LCD

- Viewing angle : 6 o'clock 12 o'clock
 Others ____ o'clock
- Type : TN STN FSTN Others
- Positive Negative
 - Reflective Transflective Transmissive
- Front polarizer : Normal Antiglare

4.Driving type

Multiplexing : ____ Duty , ____ Bias
 Frame frequency : ____ Hz

5. IC

Driver : Segment ____ , Common ____
 Controller : Included , Excluded

6.Power

Single power supply ____ V
 Dual power supply $V_{DD}-V_{SS} =$ ____ V
 $V_{DD}-V_{EE} =$ ____ V

7.Current consumption

I_{DD} ____ mA , I_{EE} ____ mA

8.Contrast adjustment type

- VR Thermo-resistor Others

9.Connector

- Without
- With , Model No : ____

10.Back lighting

- Without
 - With
- Type : EL CCFL LED Others
 Inverter YES No

11.Temperature Range

Operating : ____ °C to ____ °C
 Storage : ____ °C to ____ °C

12.Application

13.Project information

Sample delivery ____ , Quantity ____
 Production schedule ____
 Volume ____ pcs ./year